

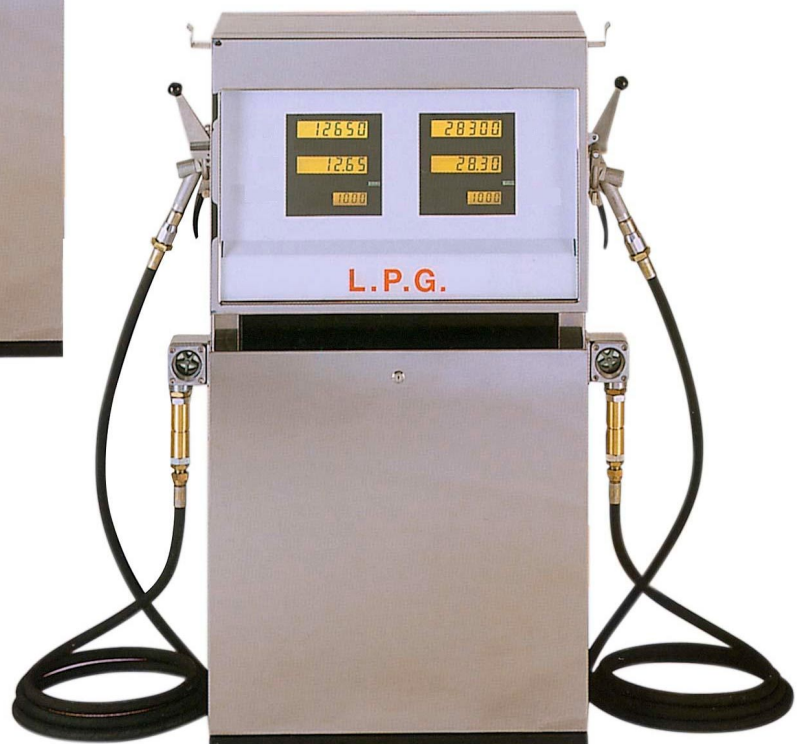


*LPG dispenser type "LPG6000P"
with electronic computer PumaRFX*

SINCERT



REG. N. 1124
UNI EN ISO 9001:2000



English Text

petrolmeccanica srl – Via Tolara di Sopra 51 – 40064 Ozzano Emilia (BO) ITALY
Tel. +39051794611 fax +39051797819 – e-mail : info@petrolmeccanica.it
WEB : www.petrolmeccanica.it

L.P.G. dispenser type "LPG6000P" is developed from the basic "LPG6000" ,produced in the past only with mechanical computer type Veeder Root.It's made in single and double delivery versions,one or dual side view.It's equipped with electronic computer suitable for Zone 1 (CPU and rele' in electric box Eex-d) ,displays and microswitch-nozzle (Eex-i). The new features available by means of the electronic computer are mainly amount and volume preset,direct supply voltage for solenoid valves,connection with remote systems type PUMALAN or ISFS-LON,self-diagnostic system for failures monitoring.

Common parts with basic model "LPG6000" as follows :

METER – Four pistons , four cylinders with stainless treatment,Accuracy $\pm 0,5\%$. Total displacement meter 0,5 liters.

DIFFERENTIAL VALVE – Piston type in a ground cylinder, with double sealing.It balances the pressure in the meter damping water hammer,stops the filling in case of pressure lowest than vapour phase.

DEGASSING MONOBLOCK – Composed by following elements :

- Stainless steel filter
- Degassing unit check valve
- Degassing unit capacity 2 liters
- Safety valve (closing ΔP 11 bar)
- Meter check valve

ELECTRIC BOXES AND LIGHTING – The electric boxes and lighting system in ZONE 1 are explosion-proof (Eex-d) made in accordance with EN 50018:1995.

BALL VALVE – Useful for Service to minimize gas losses in case of maintenance.

PRESSURE GAUGES – Each hydraulic circuit is provided with two pressure gauges filled with Glycerine.One indicates the filling pressure,the other indicates the return vapour line pressure.

SIGHT GLASS – Wide visibility,tempered glasses and impeller.

BREAK-AWAY VALVE – Both sides closing,lateral breaking point 210 N. Other types of valves are available on request.

FRAME – Panels and external frame made of stainless steel,inside hydraulic-parts supports and base are steel made and powder painted.

DELIVERY HOSE – Suited for LPG,reinforced with two high resistance steel wire braiding.

DELIVERY NOZZLE – Available in several models,in accordance with national standards for car-connectors.

Different parts from basic model as follows :

FRAME – Computer-reset switch, type Eex-i ,is connected with Eex-d box,which contains the pulser and CPU too. Ventilation under panels is provided.

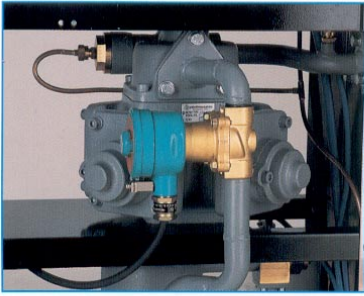
PULSER – Directly installed inside Eex-d aluminium box under CPU.Accuracy 1 impulse= 1 cl. transmitted on two channels.Connected with meter by means of a direct joint ,properly sealed to avoid un-authorized manipulations.

ELECTRONIC COMPUTER – Type HT-RFXX with serial interface for remote connection Pumalan or ISFS-LON(optional).Equipped with two LCD displays and one not-resettable electromechanical totalizer.A self-diagnostic system allows to identify the failures.Data remain readable for at least 30 minutes from power line failure.Data storage time is unlimited. The CPU box is made in explosion-proof version in conformity with EN 50018:1995 (CEI 31-1). Displays and reset-switch are made with intrinsec safety protection (Eex-i) in conformity with CENELEC EN50020,Zener barriers allocated in Eex-d CPU-box.

DISPLAY BACK-LIT – (optional) Available on request.

AMOUNT PRESET – (option) Keyboard HT-PUL (Eex-n) with 6 buttons installed on side panels.Different parameters are programmable for presetting values (liters,amount,quantity). Two buttons are programmed to recall totalizing of liters and amount from CPU-memory.This function it's only activated with serial interface installed on board.

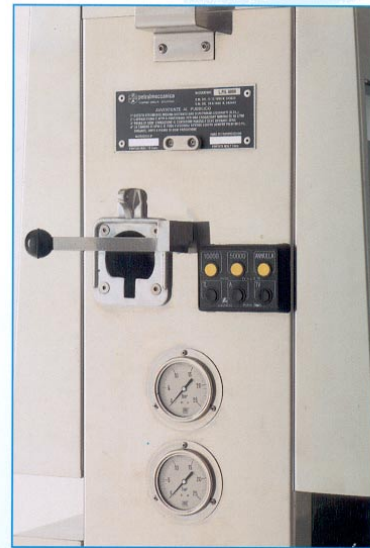
SOLENOID VALVE DOUBLE COILS – Solenoid valve, supplied 230 Vac directly from electronic computer,slows-down and stops the liquid with accuracy to the preset amount.Direct driving type,not servo-controlled,works with $\Delta P=0$ too. The coils are certificated for ZONE 1. (Eex-d or Eex-m)



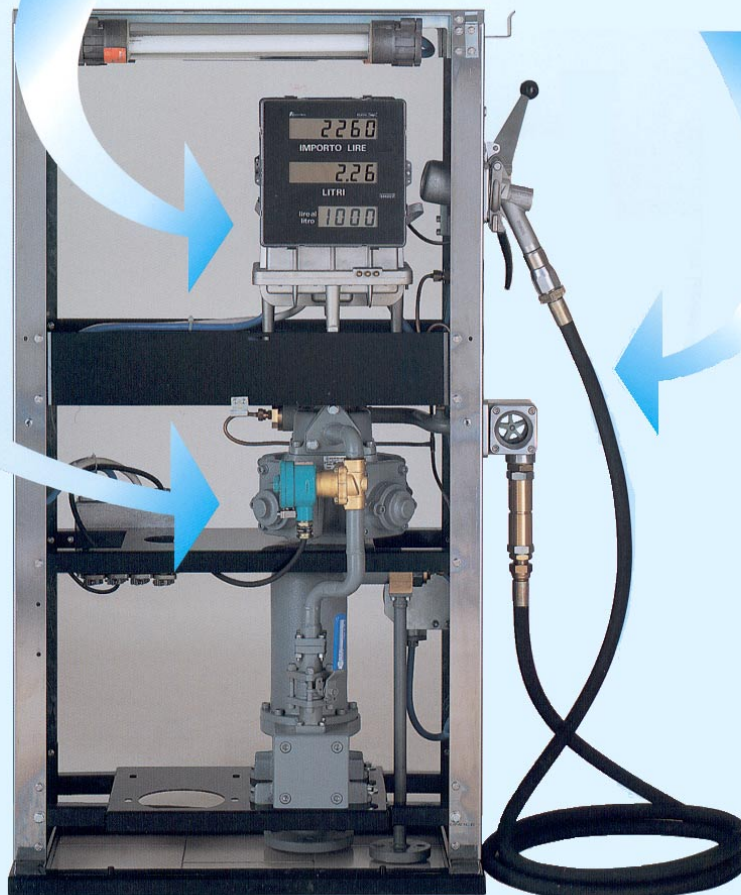
Cut-off and slowing down Solenoid valve ,to stop the preset values.

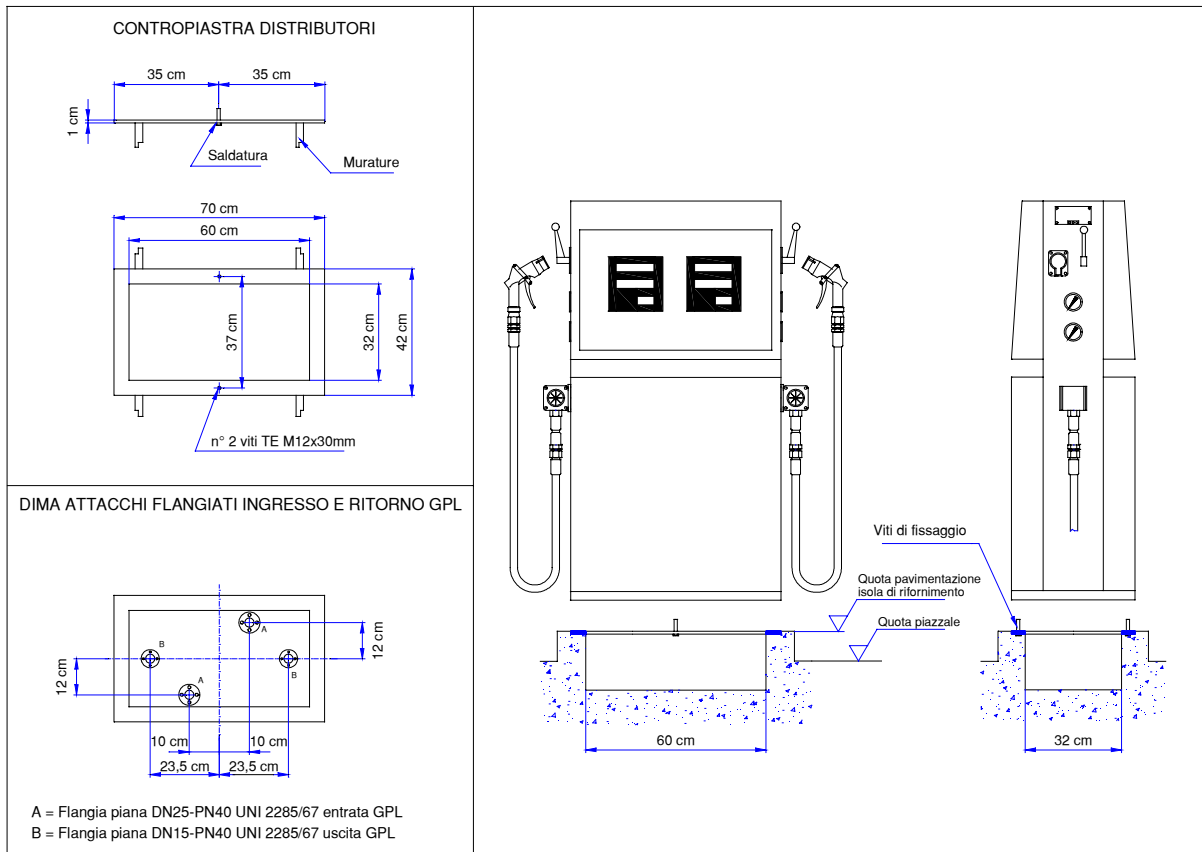


Electronic computer in Eex-d / Eex-i version with back-lit option



Side control panel with start-stop lever, preset buttons,pressure gauges.





TECHNICAL SPECIFICATIONS

VOLTAGE SUPPLY : 230 Vac

FREQUENCY : 48-62 Hz

POWER : Single delivery 112 Watt solenoid valves included , double delivery 163 solenoid valves included

WEIGHT : single delivery 143 kg. Double delivery 240 kg.

MAX SUGGESTED OPERATING PRESSURE : 18 bar (this pressure is suggested to obtain the best performance and long life of the components)

NOMINAL PRESSURE : 25 bar (this pressure is adopted as standard to project all the components)

TESTING PRESSURE (type test) : 40 bar

OPERATING TEMPERATURE : -25 C° + 55 C° (Available for temperature -40 C° + 50 C°)

METER ACCURACY : +/- 0,5 %

LPG6000P is approved by Italian Ministry of Industry and Trade (Weight and Measures Department) in accordance with harmonized International Standards (OIML). Other approvals are available on request.

ATEX - EC-Type Examination Certificate Number: FTZÙ 03 ATEX 0404

Petrolmeccanica reserves the right to modify at any time and without notice the informations contained in this brochure.
The above informations are not binding for Petrolmeccanica.